

iVascular[®]

therapies for living

luminor 35

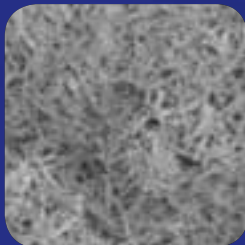
Paclitaxel-eluting PTA dilatation catheter

EFFPAC trial
171 patients

Safe and precise
delivery of Paclitaxel



Homogeneous
& **anti-cracking**
coating



Assured coating
stability during
navigation

Nanotechnology
dosage system.
Ultra-thin coating



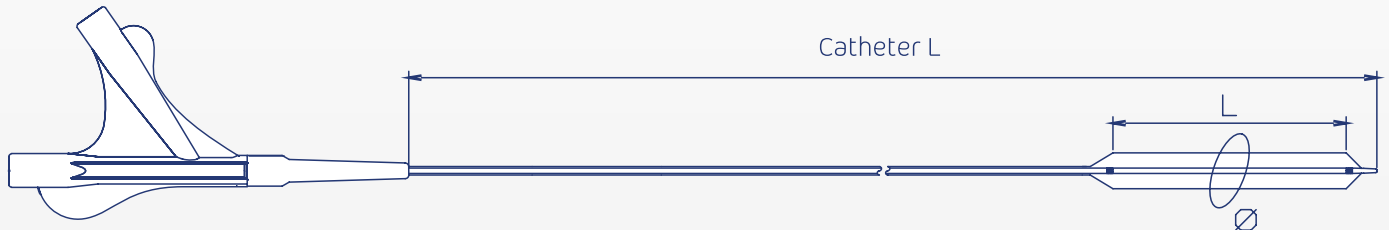
Proprietary coating
technology **TransferTech**



www.ivascular.global

luminor 35 features

- > **Over-the-wire catheter (OTW)**
- > Usable catheter length: **80 cm** or **140 cm**
- > Recommended guidewire: **0.035"**
- > Tip profile: **0.036"**
- > Crossing profile: **from 0.065" up to 0.077"**
- > Nominal pressure: **6/7 atm**
- > RBP: **16 atm**
- > ABP: **23 atm**

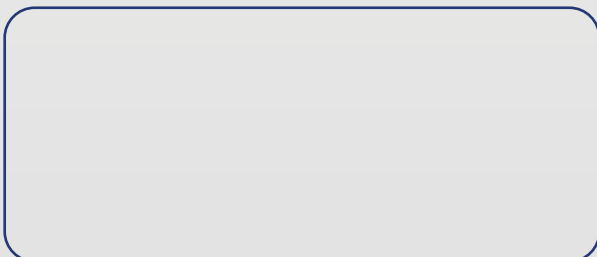


Certified product with CE mark

Usable catheter length	Balloon Ø mm	Balloon Length (mm)					
		20	40	60	80	120	150
80 cm	5.0	BP DPC35 080 500 020	BP DPC35 080 500 040	BP DPC35 080 500 060	BP DPC35 080 500 080	BP DPC35 080 500 120	BP DPC35 080 500 150
	6.0	BP DPC35 080 600 020	BP DPC35 080 600 040	BP DPC35 080 600 060	BP DPC35 080 600 080	BP DPC35 080 600 120	BP DPC35 080 600 150
	7.0	BP DPC35 080 700 020	BP DPC35 080 700 040	BP DPC35 080 700 060	BP DPC35 080 700 080	BP DPC35 080 700 120	-
140 cm	5.0	BP DPC35 140 500 020	BP DPC35 140 500 040	BP DPC35 140 500 060	BP DPC35 140 500 080	BP DPC35 140 500 120	BP DPC35 140 500 150
	6.0	BP DPC35 140 600 020	BP DPC35 140 600 040	BP DPC35 140 600 060	BP DPC35 140 600 080	BP DPC35 140 600 120	BP DPC35 140 600 150
	7.0	BP DPC35 140 700 020	BP DPC35 140 700 040	BP DPC35 140 700 060	BP DPC35 140 700 080	BP DPC35 140 700 120	-

● Introducer compatibility: **5F** ● Introducer compatibility: **6F (ID 2.20 mm)**

Distributed by:



Manufactured by:

LVD Biotech, S.L.
www.ivascular.global
info@ivascular.global